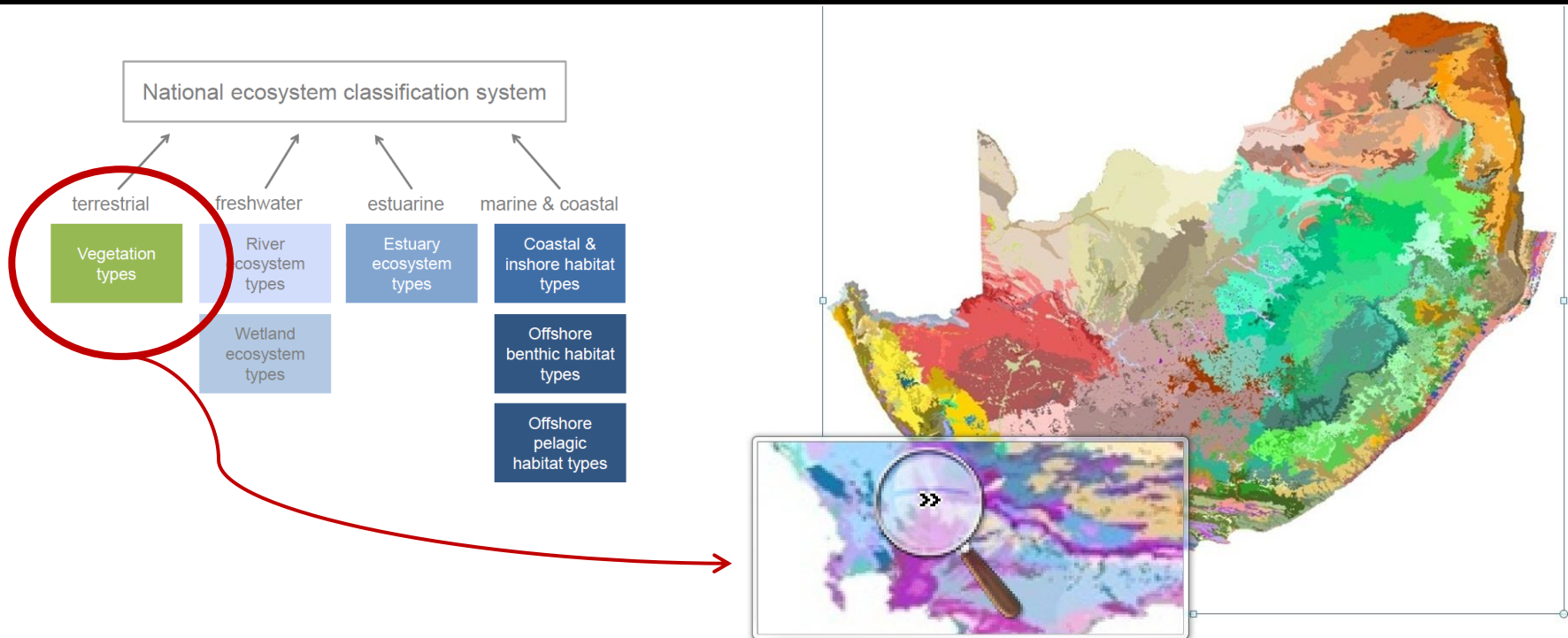


National Vegetation Map of South Africa, Lesotho and Swaziland comparing versions 2006-2012: Focusing on Fynbos

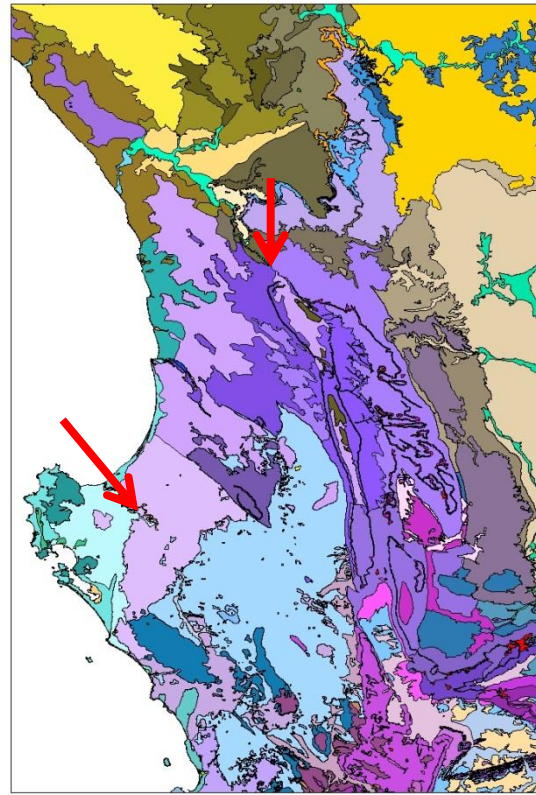


What does “updating the VegMap” mean?

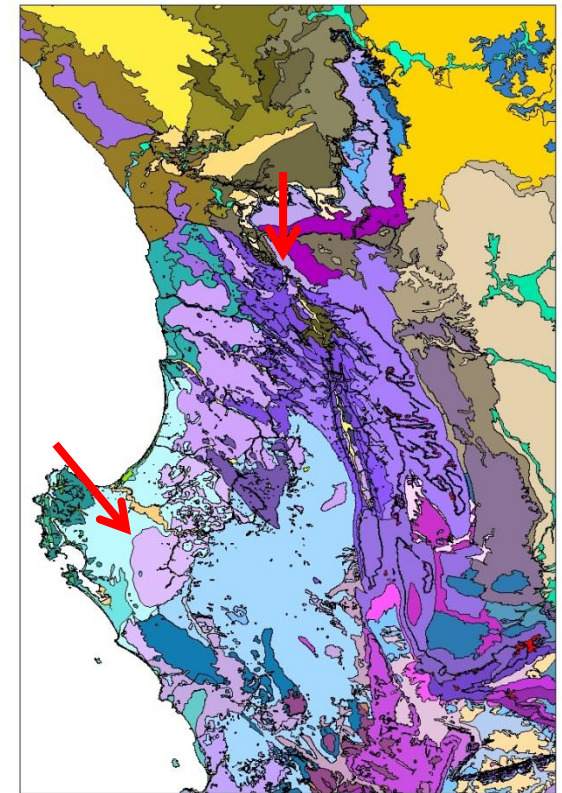
It is the **REFINEMENT** of the existing vegetation map with better quality data and not a reflection of a change in vegetation distribution



Google Earth



2006 Map

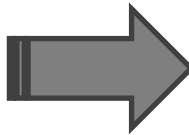


2009 Map

How do changes to the vegetation map happen? The admin ☹️

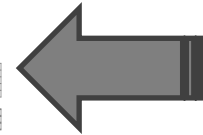
1. Proposed changes submitted via BGIS Website:

<http://bgis.sanbi.org/vegmap/map2009.asp>



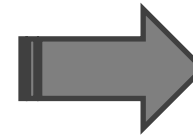
2. Complete forms on website:

1. Species List
 2. Vegetation Description
- Email to : Vegmap@sanbi.org.za



3. Filtering process:

1. Filter through justification
2. Feedback and submission refinement



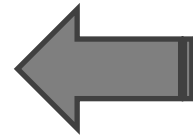
4. Submitted to VegMap Committee for approval:

1. Committee specialist opinion

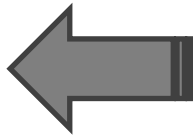


5. Further refinement:

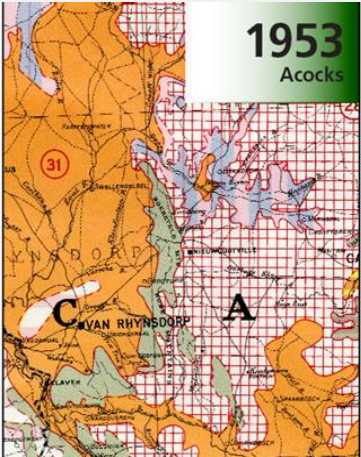
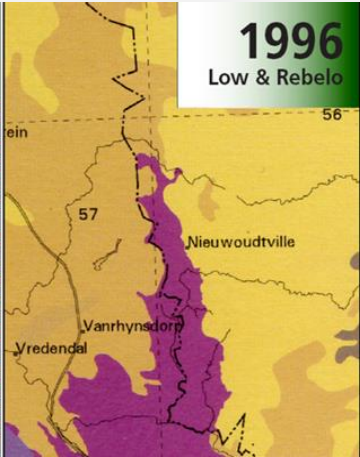

1. Vegetation Type Name
2. Description
3. Creation of Subtype



6. Map production and Publication on BGIS



Properties of the vegetation maps over time

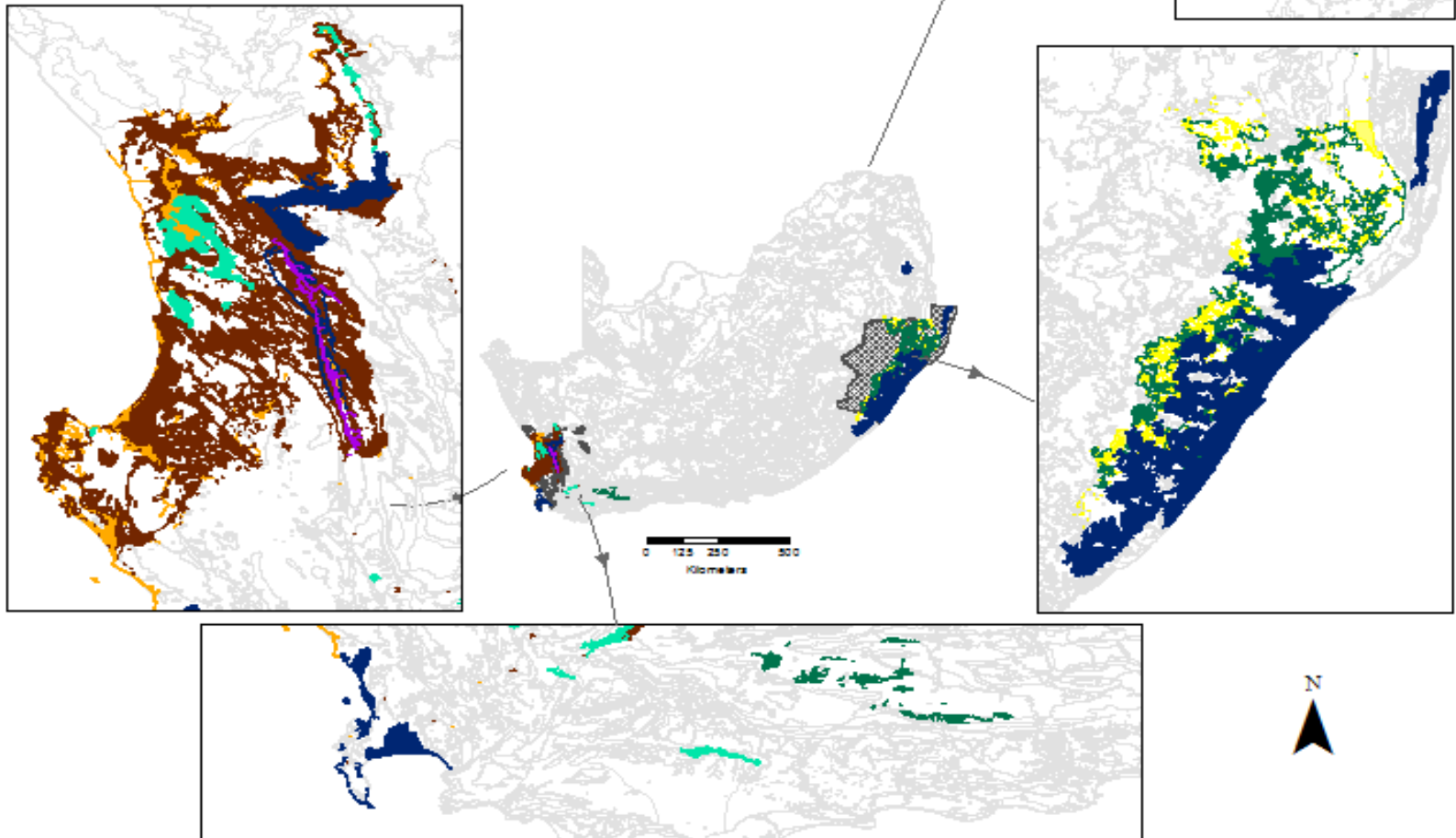
Properties	Vegetation maps				
	Acocks 1953	Low & Rebello 1996	VEGMAP 2006	VEGMAP 2009	VEGMAP 2012
Published scale	1:1 500 000	1:1 850 000 1:2 000 000	1:1 000 000	1:1 000 000	1:1 000 000
					
Number of Vegetation types	70	68	435	439	447
Number of Polygons	548	3661	17 796	19 632	44 908
Average mapped unit area (km ²)	2313	345	71 (SD±82)	65 (SD±78)	29 (SD±52)



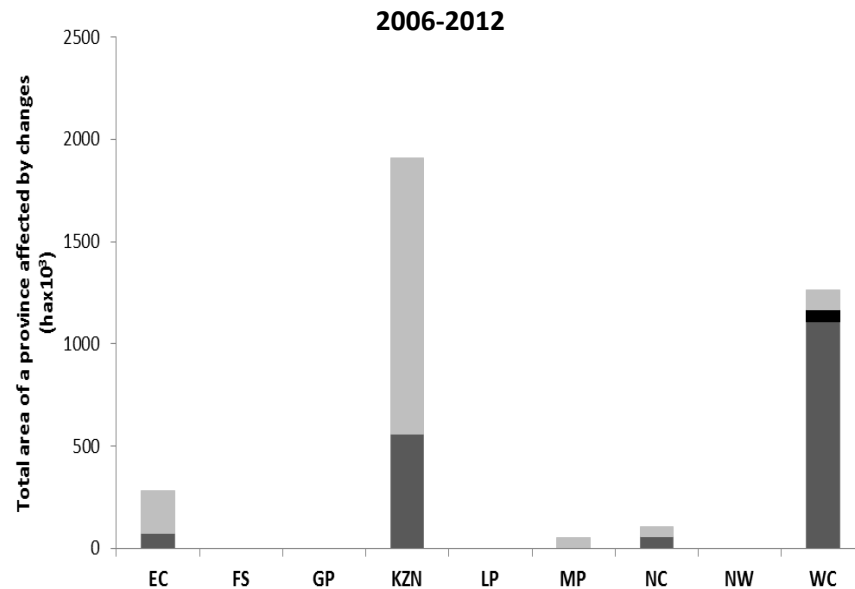
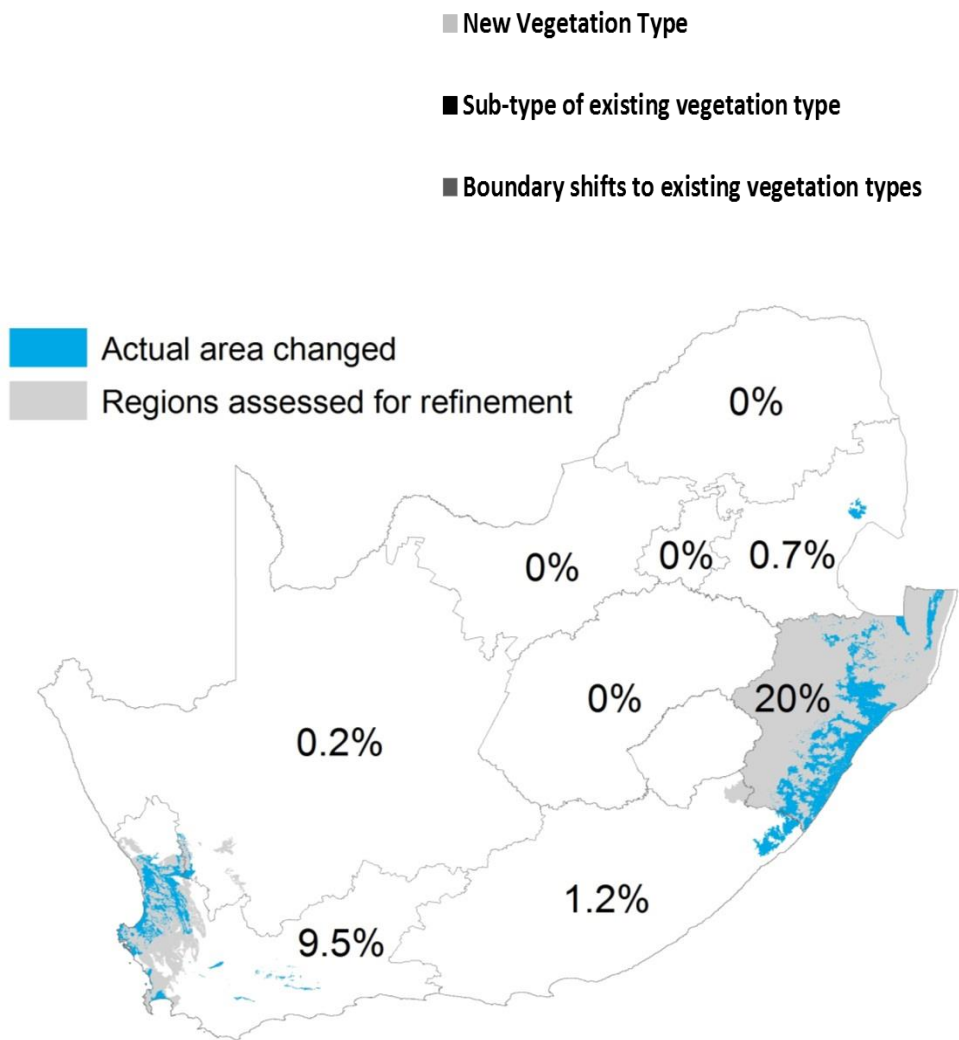
Changes to the VEGMAP since 2006

2.8% of the map updated

-  New Vegetation Type (2006-2009)
-  New Vegetation Type (2009-2012)
-  New Sub-type of existing Vegetation Types (2006-2012)
-  Expansion of existing Vegetation Type boundary (2006-2009)
-  Expansion of existing Vegetation Type boundary (2009-2012)
-  Reduction of existing Vegetation Type boundary (2006-2009)
-  Regions refined



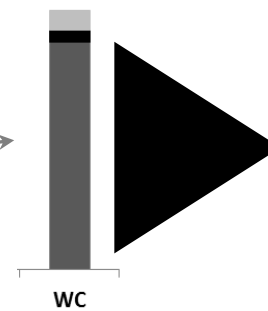
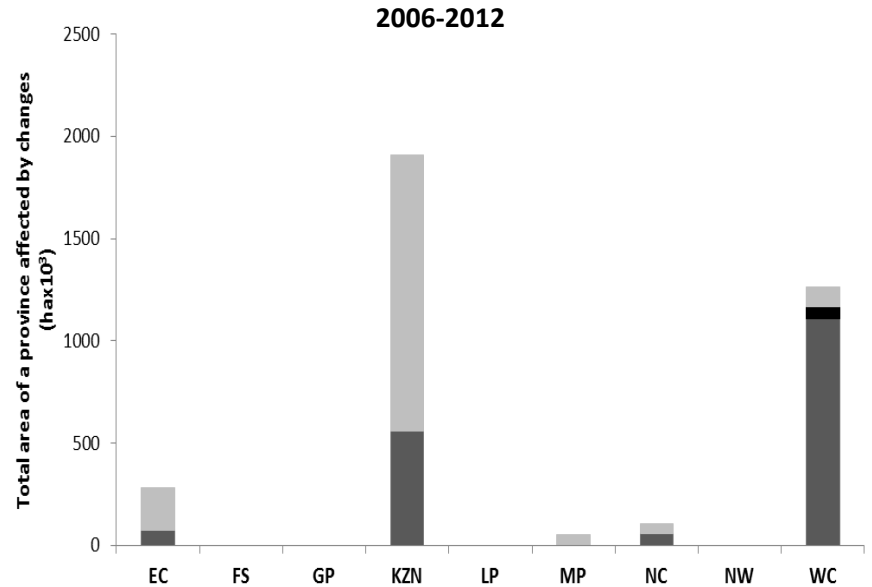
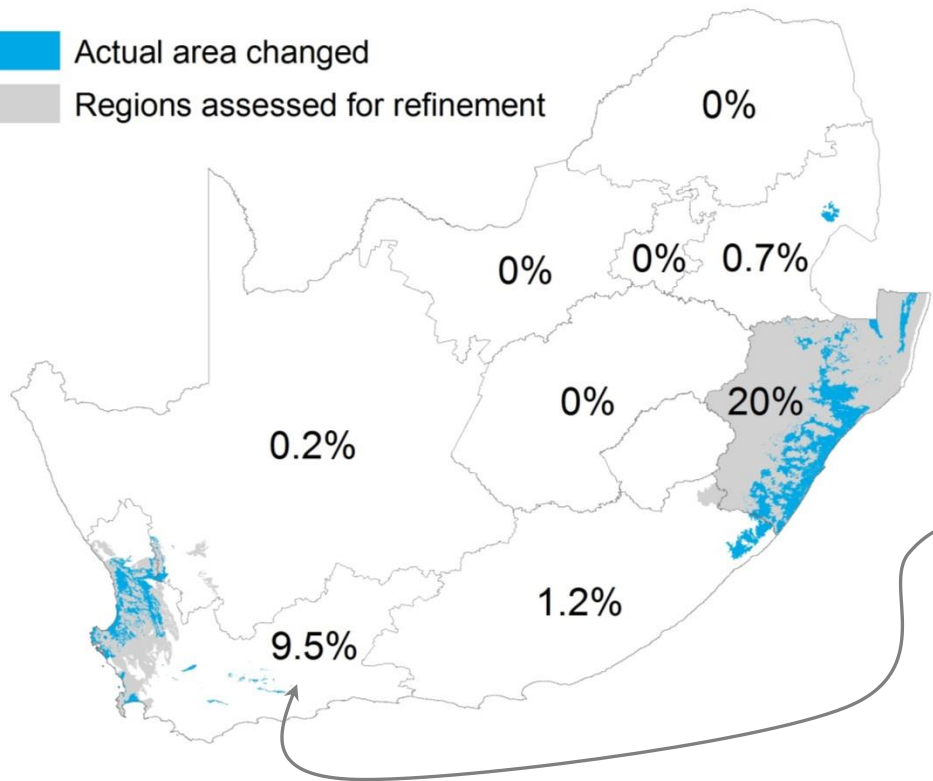
Changes to the VEGMAP by Province



Changes to the VEGMAP by Province

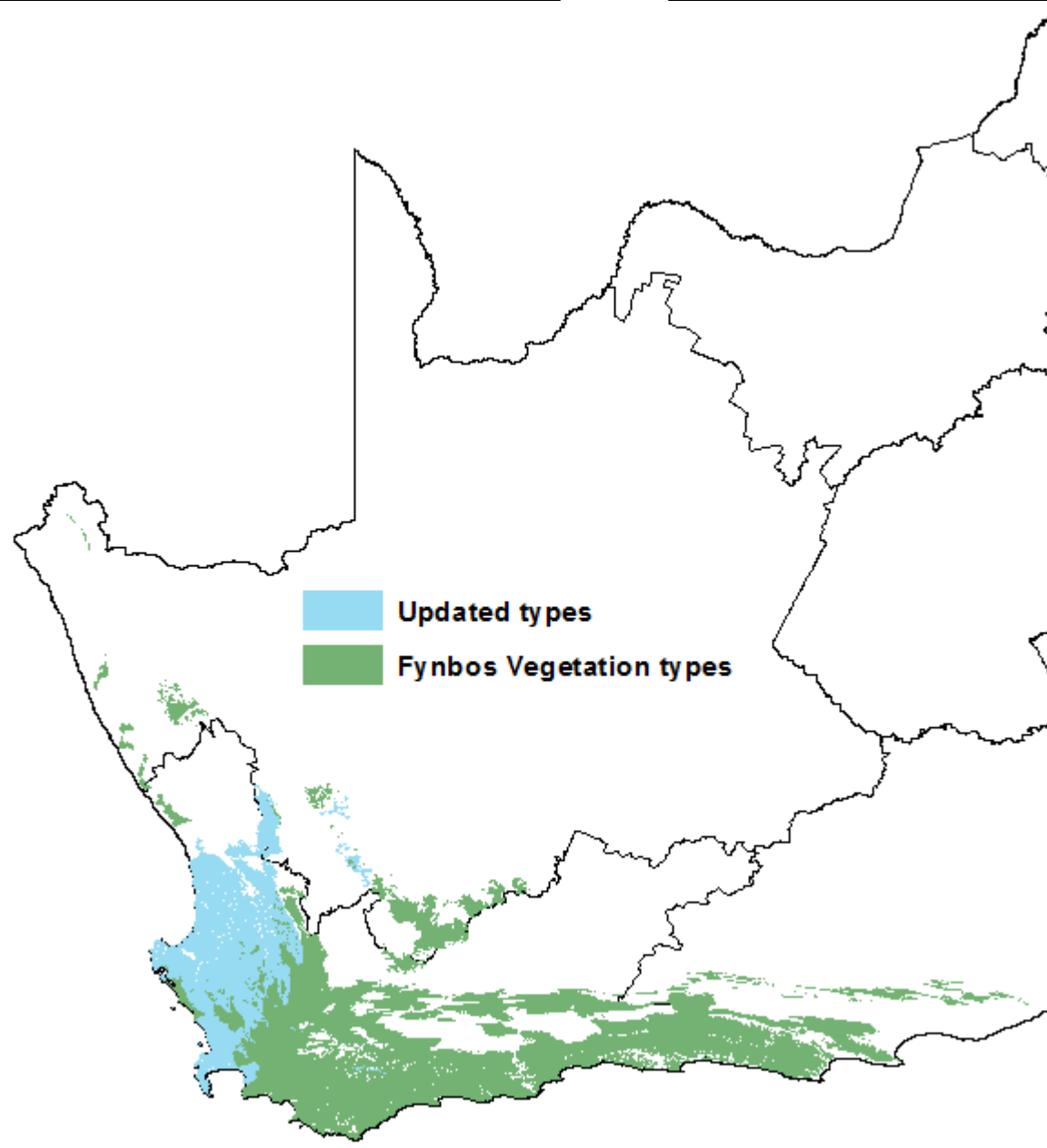
- New Vegetation Type
- Sub-type of existing vegetation type
- Boundary shifts to existing vegetation types

- Actual area changed
- Regions assessed for refinement



80% within Fynbos

Summary of changes to the Fynbos Vegetation Types



**Area of Fynbos VegTypes updated:
25.40%**

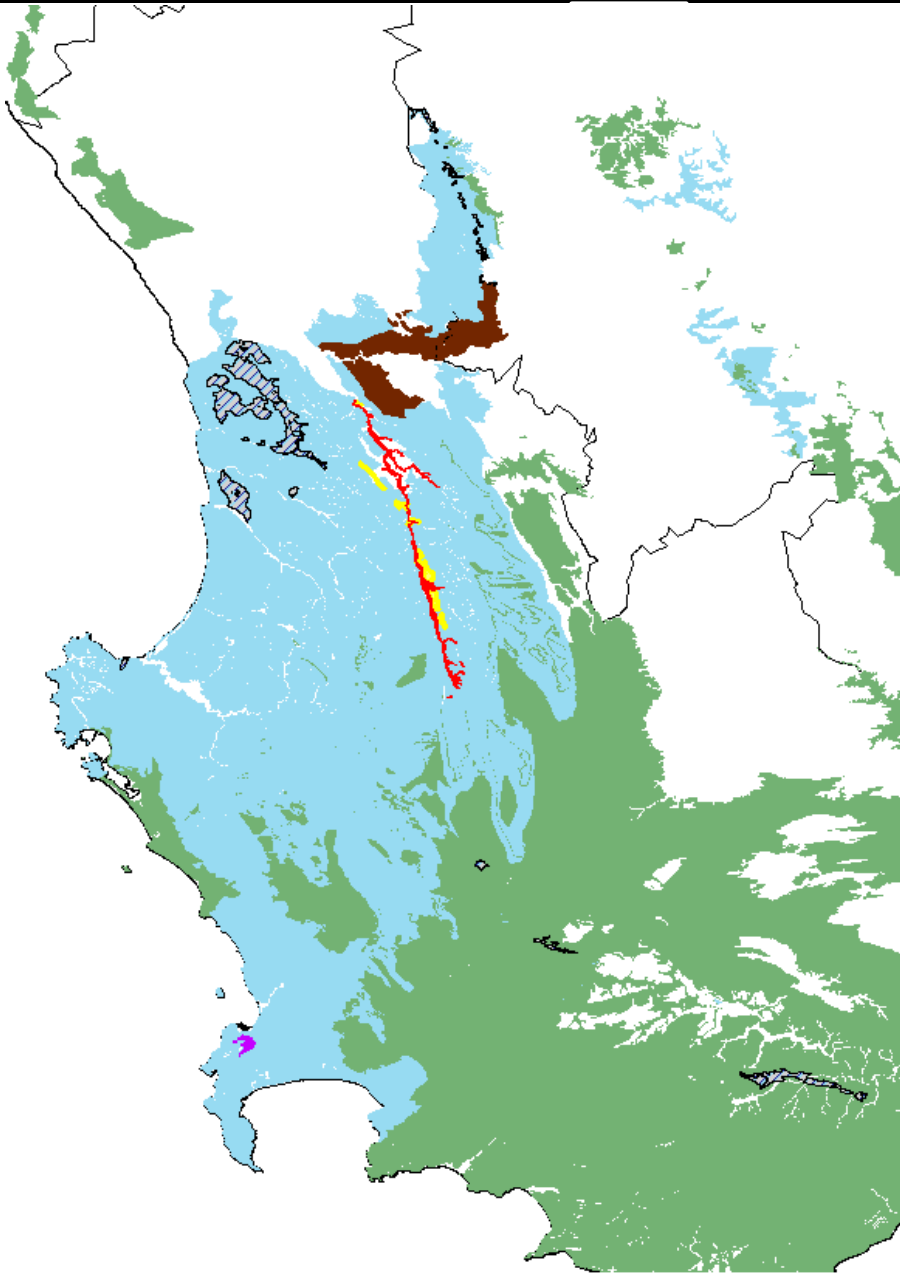
Types affected: 50 of 122


New Types: 4

Area New vegetation types: 0.82%

Sub-types: 8


New Fynbos Types



 FRs 20 Citrusdal Shale Renosterveld

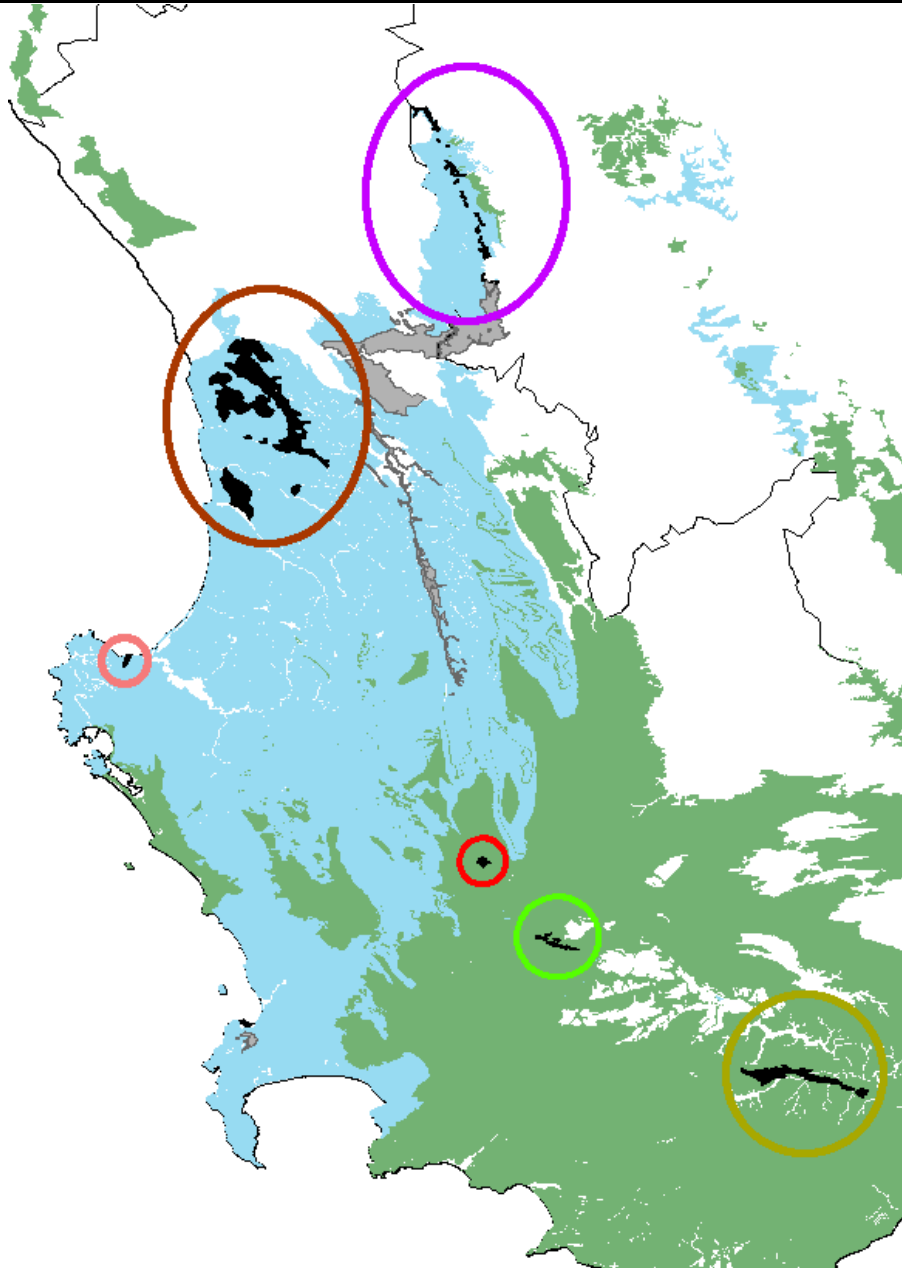
 FFs 32 Nardouw Sandstone Fynbos

 FFa5 Olifants Alluvium Fynbos

 FFh 11 Peninsula Shale Fynbos

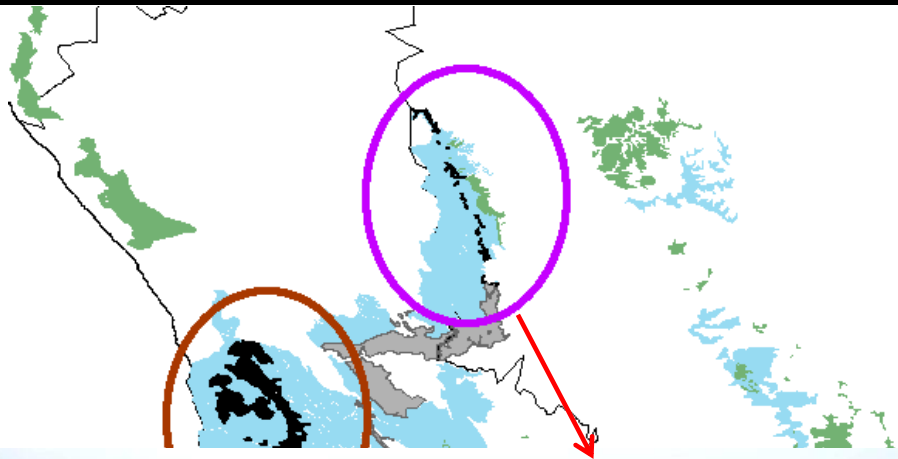
 Sub-types

Fynbos Subtypes added



- Nieuwoudtville Shale Renosterveld**
 - FRs 2.2 Nieuwoudtville Sandstone Renosterveld
 - FRs 2.3 Noord Bokkeveld Shale Renosterveld
 - FRs 2.4 Papkuilsfontein Sandstone Renosterveld
- Lambert's Bay Strandveld**
 - FS 1.2 Graafwater Flats Strandveld
- Saldanha Flats Strandveld**
 - FS 3.2 Saldanha Flats Calcareous Strandveld
- Brede Shale Renosterveld**
 - FRs 8.2 Kluitjieskraal Silcrete Renosterveld
- Brede Alluvium Fynbos**
 - FFa 2.2 Nekkies Silty Floodplain
- North Sonderend Sandstone Fynbos**
 - FFs 13.2 Stormsvlei Aalwyn Fynbos

Fynbos Subtypes added



Nieuwoudtville Shale Renosterveld
FRs 2.2 Nieuwoudtville Sandstone Renosterveld
FRs 2.3 Noord Bokkeveld Shale Renosterveld
FRs 2.4 Papkuilsfontein Sandstone Renosterveld

Lambert's Bay Strandveld
FS 1.2 Graafwater Flats Strandveld

Saldanha Flats Strandveld
FS 3.2 Saldanha Flats Calcareous Strandveld

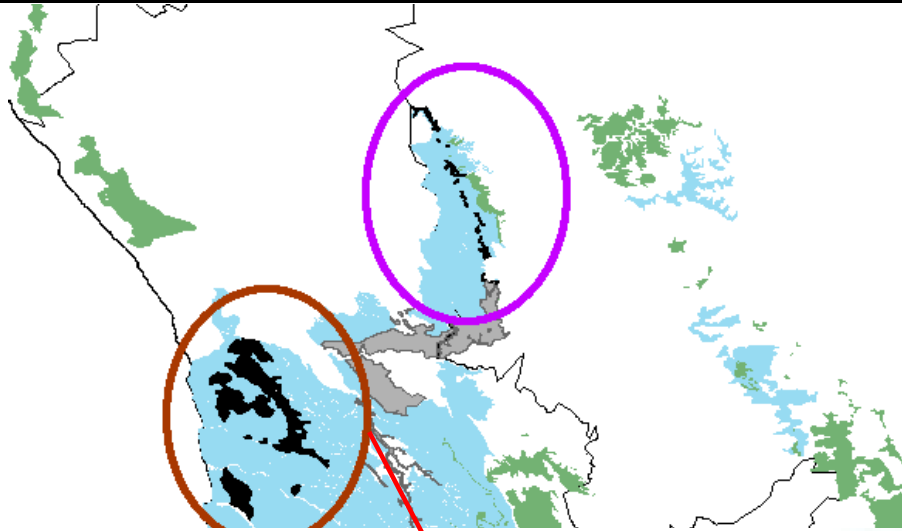
Breede Shale Renosterveld
FRs 8.2 Kluitjieskraal Silcrete Renosterveld

Breede Alluvium Fynbos
FFa 2.2 Nekkies Silty Floodplain

North Sonderend Sandstone Fynbos
FFs 13.2 Stormsvlei Aalwyn Fynbos



Fynbos Subtypes added



- Nieuwoudtville Shale Renosterveld
 - FRs 2.2 Nieuwoudtville Sandstone Renosterveld
 - FRs 2.3 Noord Bokkeveld Shale Renosterveld
 - FRs 2.4 Papkuilsfontein Sandstone Renosterveld

- Lambert's Bay Strandveld
 - FS 1.2 Graafwater Flats Strandveld

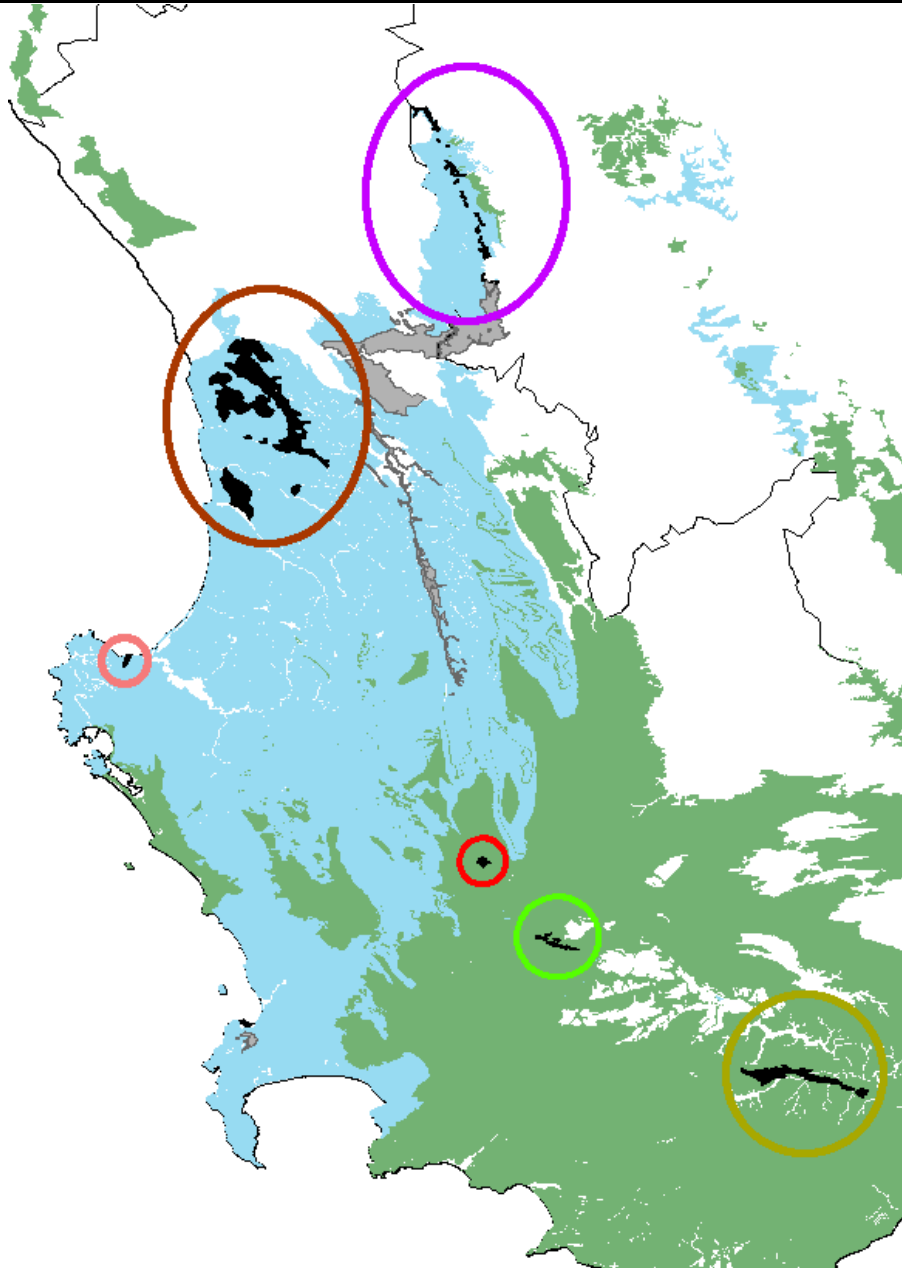
- Saldanha Flats Strandveld
 - FS 3.2 Saldanha Flats Calcareous Strandveld

- Breede Shale Renosterveld
 - FRs 8.2 Kluitjieskraal Silcrete Renosterveld

- Breede Alluvium Fynbos
 - FFa 2.2 Nekkies Silty Floodplain

- North Sonderend Sandstone Fynbos
 - FFs 13.2 Stormsvlei Aalwyn Fynbos

Fynbos Subtypes added



- Nieuwoudtville Shale Renosterveld**
 - FRs 2.2 Nieuwoudtville Sandstone Renosterveld
 - FRs 2.3 Noord Bokkeveld Shale Renosterveld
 - FRs 2.4 Papkuilsfontein Sandstone Renosterveld
- Lambert's Bay Strandveld**
 - FS 1.2 Graafwater Flats Strandveld
- Saldanha Flats Strandveld**
 - FS 3.2 Saldanha Flats Calcareous Strandveld
- Breede Shale Renosterveld**
 - FRs 8.2 Kluitjieskraal Silcrete Renosterveld
- Breede Alluvium Fynbos**
 - FFa 2.2 Nekkies Silty Floodplain
- North Sonderend Sandstone Fynbos**
 - FFs 13.2 Stormsvlei Aalwyn Fynbos

Fynbos Subtypes added



- Nieuwoudtville Shale Renosterveld**
 - FRs 2.2 Nieuwoudtville Sandstone Renosterveld
 - FRs 2.3 Noord Bokkeveld Shale Renosterveld
 - FRs 2.4 Papkuilsfontein Sandstone Renosterveld

- Lambert's Bay Strandveld**
 - FS 1.2 Graafwater Flats Strandveld

- Saldanha Flats Strandveld**
 - FS 3.2 Saldanha Flats Calcareous Strandveld

- Breede Shale Renosterveld**
 - FRs 8.2 Kluitjieskraal Silcrete Renosterveld

- Breede Alluvium Fynbos**
 - FFa 2.2 Nekkies Silty Floodplain

- North Sonderend Sandstone Fynbos**
 - FFs 13.2 Stormsvlei Aalwyn Fynbos



Fynbos Subtypes added



Nieuwoudtville Shale Renosterveld
FRs 2.2 Nieuwoudtville Sandstone Renosterveld
FRs 2.3 Noord Bokkeveld Shale Renosterveld
FRs 2.4 Papkuilsfontein Sandstone Renosterveld

Lambert's Bay Strandveld
FS 1.2 Graafwater Flats Strandveld

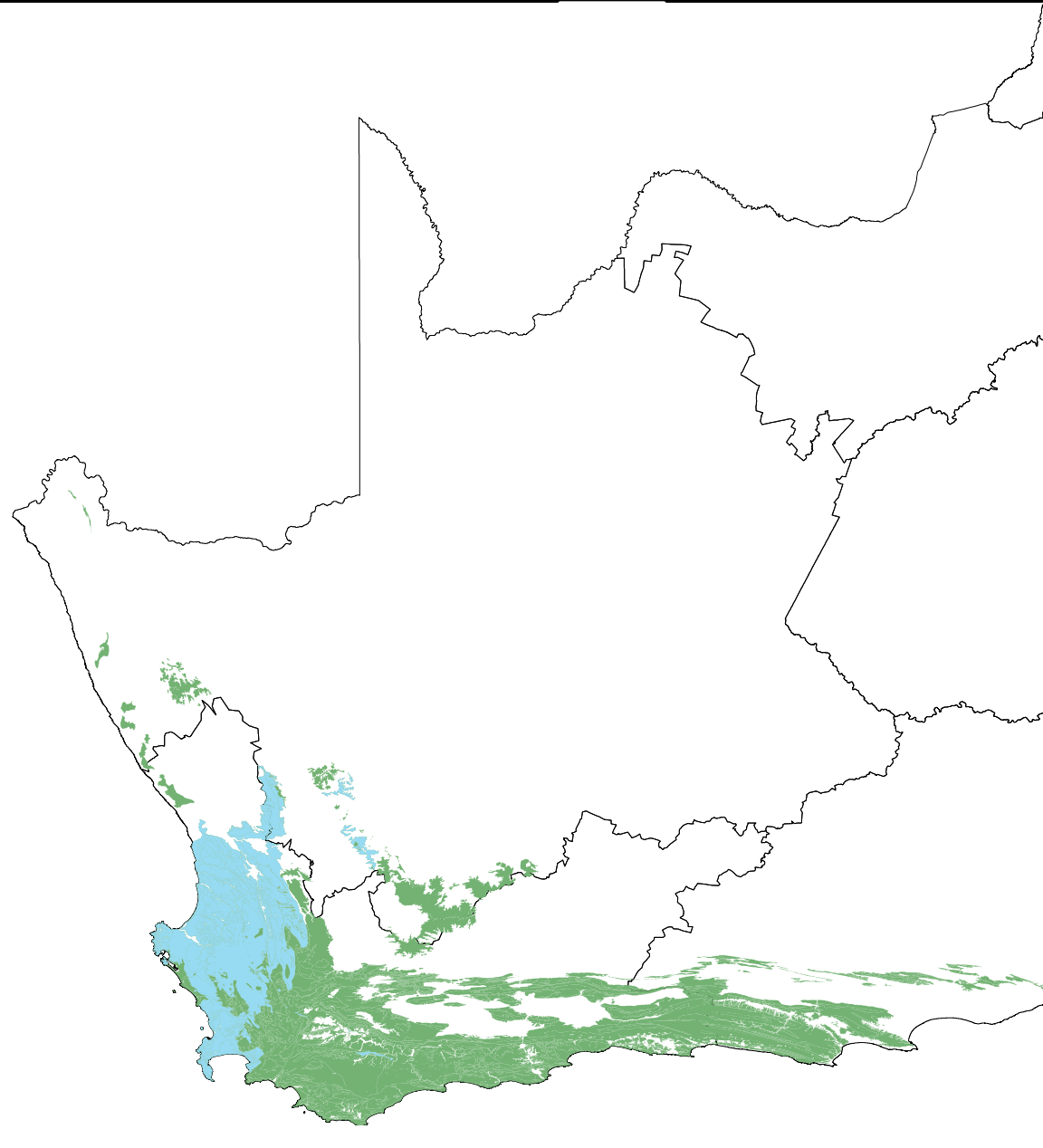
Saldanha Flats Strandveld
FS 3.2 Saldanha Flats Calcareous Strandveld

Breede Shale Renosterveld
FRs 8.2 Kluitjieskraal Silcrete Renosterveld

Breede Alluvium Fynbos
FFa 2.2 Nekkies Silty Floodplain

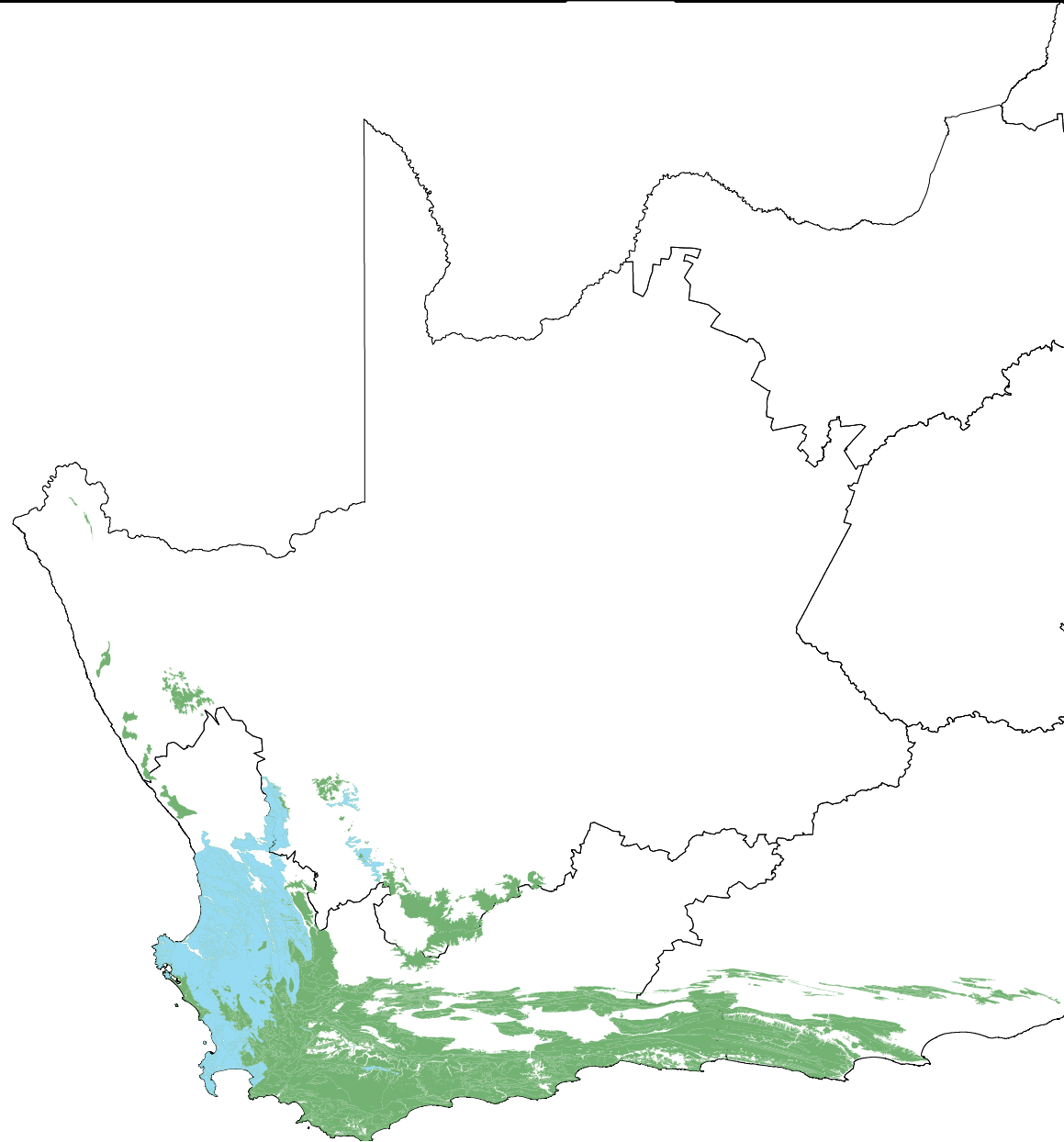
North Sonderend Sandstone Fynbos
FFs 13.2 Stormsvlei Aalwyn Fynbos

Where are we now?



- VegMap 2012 finalised
- VegMap2012_mobile
- VegMap 2015

Future version and the NBA 2018



- Resolving Wetlands in the VegMap
- Forests in the VegMap
- Refining coastline and coastal habitats & integration with the marine classification map
- Expanding the spatial extent of updates across the country: Capacity building?
- Strengthening the VegMap with plot data

VegMap: an incredibly useful tool



VegMap@sanbi.org.za

